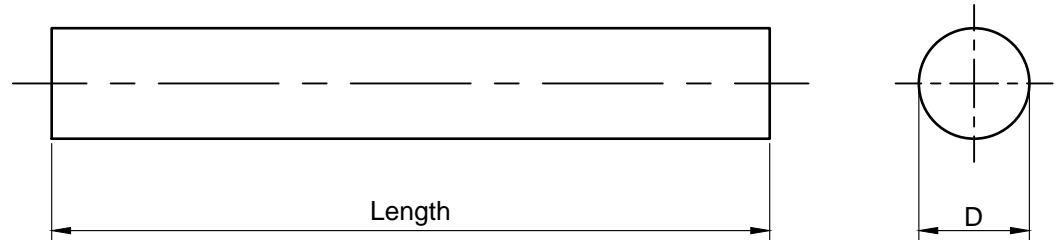


Type	Dimensions in mm		Weight in kg
	D	Length	
MME ZR20 - 500	20	500	1.2
MME ZR20 - 600	20	600	1.4
MME ZR25	25	500	1.8
MME ZR30	30	500	2.5
MME ZR40	40	500	4.5
MME ZR50	50	500	7.0
MME ZR60	60	500	10.0
MME ZR70	70	500	13.7
MME ZR80	80	500	17.7
MME ZR90	90	500	22.7
MME ZR100	100	500	27.2
MME ZR125	125	500	46.5
MME ZR150	150	500	66.5




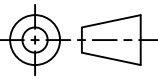
**Zinc alloy specifications acc. US Mil. Spec-A-18001K**

Components	Impurities	Percentage (%)
Cadmium		0.025 - 0.07
Aluminium		0.10 - 0.5
Zinc		Remainder
	Copper	0.005 max
	Iron	0.005 max
	Lead	0.006 max
	Others total	0.10 max

Electrochemical capacity: 780 AHr/Kg nominal  
Solution potential: -1050mV vs. Ag/AgCl reference cell nominal (in seawater)

Other specifications are available on request.

Note: All dimensions and weights are nominal. Dimensions in mm  
 All data is subject to change without prior notice

Date:			<b>Cathodic Protection Division</b> Rietdekkerstraat 16 P.O. Box 4222 2980 GE Ridderkerk Netherlands Tel: +31 (0)180 48 28 28 E-mail: sales@mme.nl www.mme-group.com		Projection: 
			Order number:		<b>Zinc Rod Anodes</b>
Description:	Drawn: PdG	Date: 31-07-13	Project:		Sheet 1/1
	Checked: JdR	Date: 31-07-13	Dwg: MME ZR		
Rev.	Approved: PM	Date: 31-07-13	Copyright MME. No part of this drawing may be copied, disclosed, or made public, in any form, without prior written consent of Materiaal Metingen Europe.		